

PACESETTER

**SETTING A BETTER PACE
FOR THE CORRUGATED
INDUSTRY SINCE 1988.**



#1 in replacement set-up controls
with over 560 systems sold !



Better by Experience...

Since 1988, Intelligent Machine Control has been specializing in converting machine control. That's all we do, and precisely why we offer the best replacement systems in the business. With more than 250 Pacesetters currently installed on Langston flexos and with installations on machines from 32 different manufacturers, we have the most experience in retrofitting control systems to more different types of converting machines than anyone else.

The Pacesetter 3.0 can be retrofitted to any motorized flexo-folder-gluer, printer-slotter or rotary die cutter, including slot score slot or single shaft slotting configurations, non-centerline machines (EMBA) or machines with movable print units sharable with other machines.

Better by Design...

It all begins with the operating system. Pacesetter 3.0's software operates under Linux, which has all the advantages of Windows, but without all of the problems.

- Extreme stability & crash resistance with no need for an uninterruptible power supply (power may simply be switched off)
- Strong, built-in virus resistance
- Open Source & License Free – Anyone may download Linux from the Internet without cost (software equivalent of open architecture)

Pacesetter 3.0 hardware and software were specifically engineered to be Open Architecture. Specifications are public. This makes parts available from many different sources; including your local computer store. Without depending on specific vendors, you are protected against high prices or supply disruptions of critical replacement parts.

Better by the Benefits...

- Accurate Register Control
 - 1/32 inch (0.8 mm) adjustments
 - No need to close machine "in time"
 - Automatic return to last register – After machine re-closes, Pacesetter automatically brings registers back into registration typically saving 5 to 10 minutes
- Accurate Caliper Adjustments
- Common User Interface allows operators to easily move from machine to machine
- Production Counting – boxes and area
- Easy interface to Scheduling Systems with SQL data base
- Highly Reliable and Maintainable
 - Common Spare Parts
 - Open Architecture



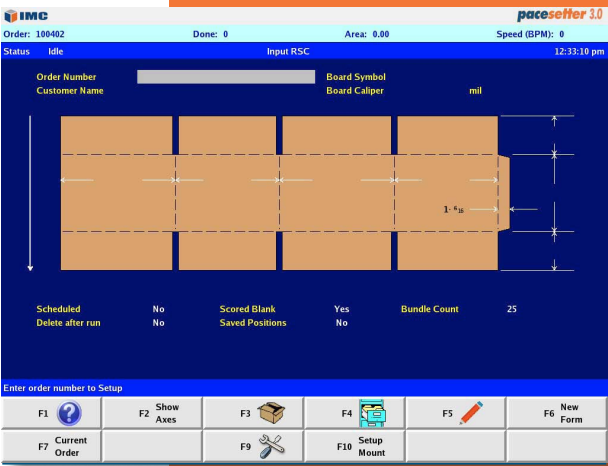
Pacesetter 3.0

Better in Use...

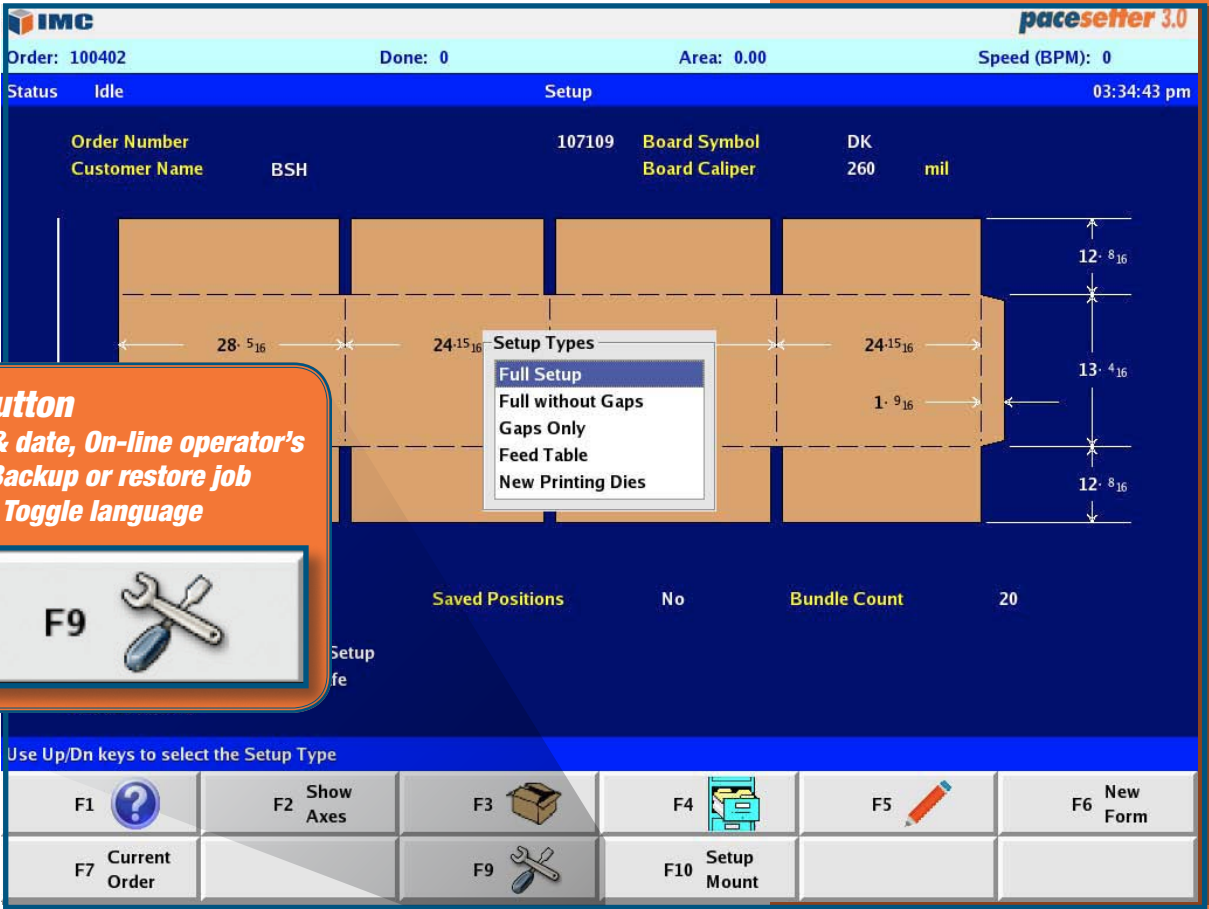
To enter a new order, the operator simply copies the box dimensions from his order sheet into the blank dimension fields on the box diagram. Information is entered via a standard PC keyboard. For repeat jobs, the Pacesetter's Catalog allows for easy recall of previous set-ups. Jobs may be sorted by Order Number, Customer Name, or Date Last Used. Pressing the file cabinet icon displays the catalog screen.

To set-up the machine, jobs are selected from the catalog. After viewing the new job and verifying the information, the operator initiates the desired type of set-up.

The Axis Page displays a straightforward tabular array of axis names with status, set points and positions. Individual axes may be selected and adjusted using simple combinations of keystrokes.



Job Entry



Set Up

Better than the rest...

- Universal Applicability – Pacesetter 3.0 operates on machines from every major manufacturer. Ward, Martin, Emba and other OEMs offer upgrades only for their own equipment. If you want to standardize on a common system, IMC is your solution.
- Cost – Pacesetter 3.0 is less expensive to buy, less expensive to install, and less expensive to maintain.

As just one example, Sun Automation's SunSet uses a proprietary touch screen with a replacement price of thousands of dollars (available only from Sun). The Pacesetter uses a standard color flat panel, keyboard, and mouse – available at any computer store for about \$300.

With touch screens in general, alphanumeric data entry is cumbersome because of the lack of tactile feedback and sharply angled screen.

Pacesetter 3.0 L - Better for Langstons...

- Experience – Pacesetter has more than 250 Langston installations – more than all others combined.
- Designed specifically to replace and greatly upgrade the Langston Saturn LMC
- Same software and basic computer parts as all other Pacesetters
- Quick installation – typically over a weekend

Only IMC gives you the proven confidence of being able to retrofit all your converting equipment with an open architecture design that simplifies maintenance and reduces training due to a common user interface.



423 Commerce Lane
Unit 6
West Berlin, NJ 08091

(856) 768-5370
(800) 462-8660
www.imcbox.com